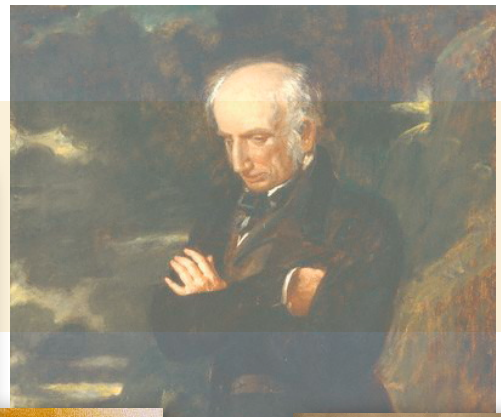
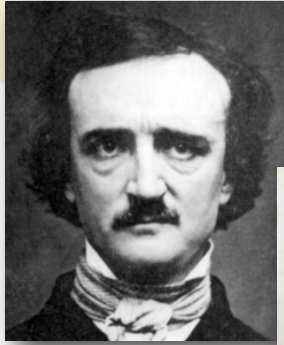


## Classic Works Assignment 8



- Memorize **stanza 1** of William Wordsworth's "Expostulation and Reply."
- Read Kafka's "Hunger Artist" (online under "Materials Needed"), Bronte's "The Red-Room," Dickens' "Miss Havisham," and Mary Shelley's "The Creation of Frankenstein." Complete the study guide questions on this material. Be sure to know the literary terms.
- Read Wordsworth's assessment of Gothic in the reader's appendix and complete the study guide material.
- Write the introduction of your essay on *Animal Farm*.

### Long Range Assignment

- Choose a book for your book report. It will be due on the second week of January.
- The five-paragraph expository essay on George Orwell's *Animal Farm* explaining the fable as a satire of totalitarianism will be due **the second Friday in November**. Remember the correct formatting of your paper:
  - \* Include your name, date, and the title of your critical paper in the upper right hand corner of your paper (single spaced).
  - \* Double space your essay. Do not put extra spaces between your paragraphs, and be sure to indent the first line of each.
  - \* Use 12-point font.



- \* Staple your paper with the grade sheet as the front page. You can print out the front page **here**.